

Browser-Java Compatibility Setting

Instruction for TLSv1.2 Setup

Contents

- A. Browser Setup 1
 - a. Browser Compatibility Setting 1
 - b. Add to Trusted Site: 2
 - c. TLS – Setup for IE..... 3
 - d. TLS – Browser Compatibility Check 6
 - e. EDGE browser set up.....8
- B. JAVA Set up and compatible JAVA Versions..... 12
 - a. Install Java Runtime Environment (JRE) 1.8..... 12
 - b. Compatible JAVA Versions..... 10
- C. JAVA Console and URL Compatibility 12
 - a. Add to Java Site List 12
 - b. Security Medium..... 12
 - c. TLS – Set up 13
- D. Checking JAVA Installation 20
- E. Dos AND Don'ts 25

A. Browser Setup

a. Browser Compatibility Setting:

This site is best viewed in Internet Explorer 9.0. Internet Explorer 8 and Windows XP are no more compatible due to vulnerabilities – Please visit below link for more details
<https://www.microsoft.com/en-us/WindowsForBusiness/end-of-xp-support>

Browser-Java Compatibility Setting

If you are using Internet Explorer 10 or above then enable compatibility view available under Tools menu as:

For Internet Explorer 10 – Open the Website – Press F12 on your keyboard – Change the Browser mode to IE9 – Apply - OK

For Internet Explorer 11 -Open an Internet Explorer page – Tools - Compatibility View Settings – URL of following web sites needed to key-in in the ‘Add this website’ edit box one by one and click “ADD” button.

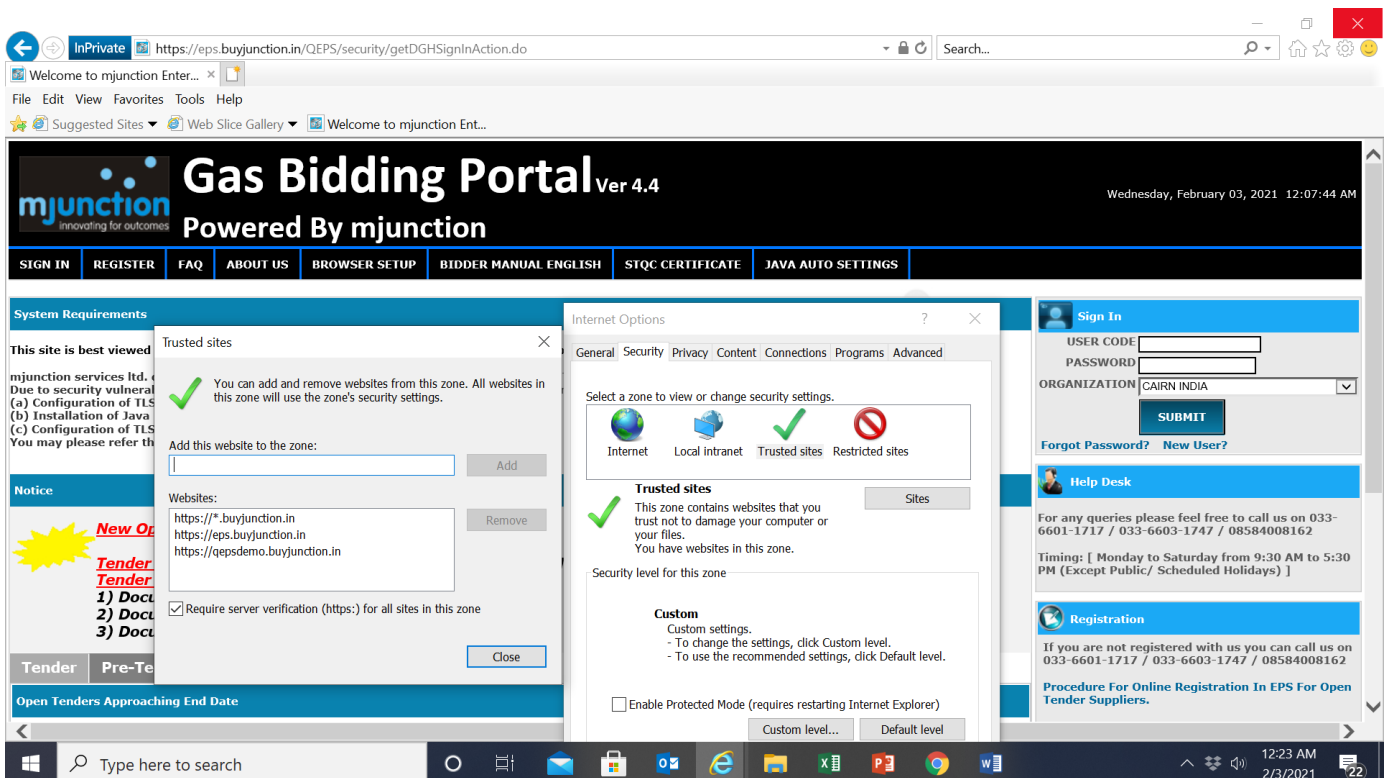
For GAS BIDDING: <https://eps.buyjunction.in/gasbidding>

b. Add to Trusted Site:

Open an Internet Explorer page - Tools - Internet Options - Security tab – Select Trusted Sites – click Sites

URL of following web sites needed to be key-in to the edit box under ‘Add this website to the zone:’ and click ‘Add’ button one by one

For GAS BIDDING: <https://eps.buyjunction.in/gasbidding>

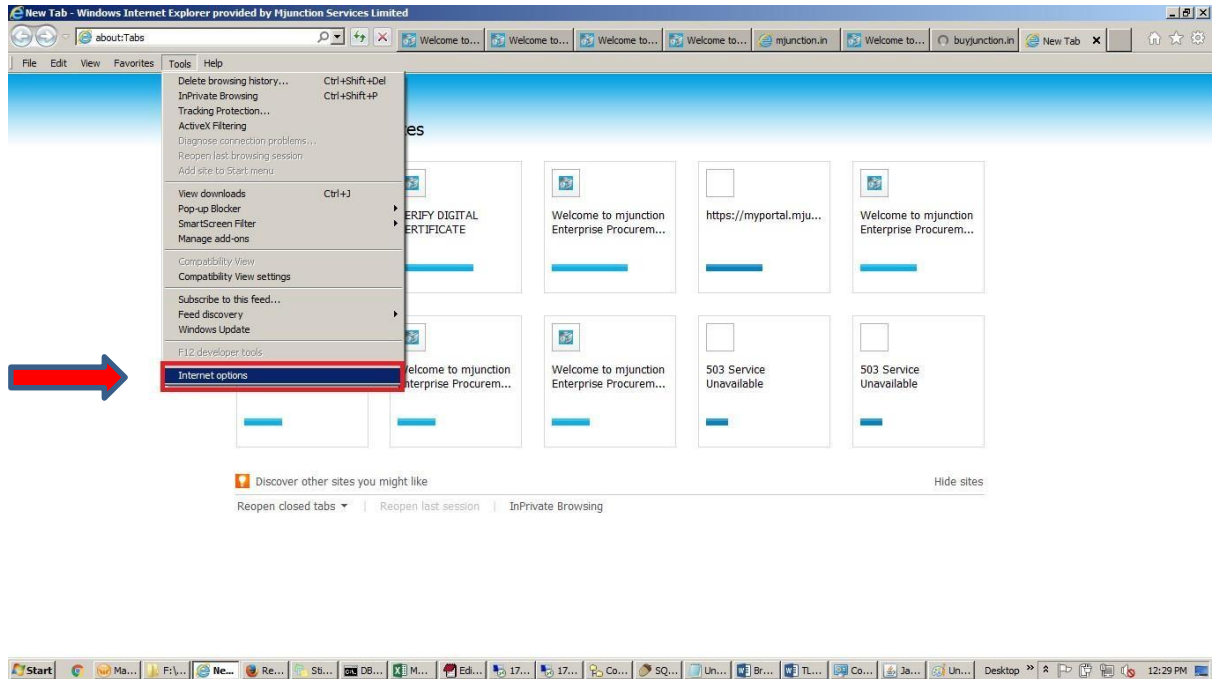


Browser-Java Compatibility Setting

c. TLS – Setup for IE

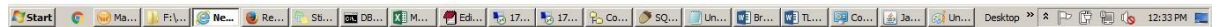
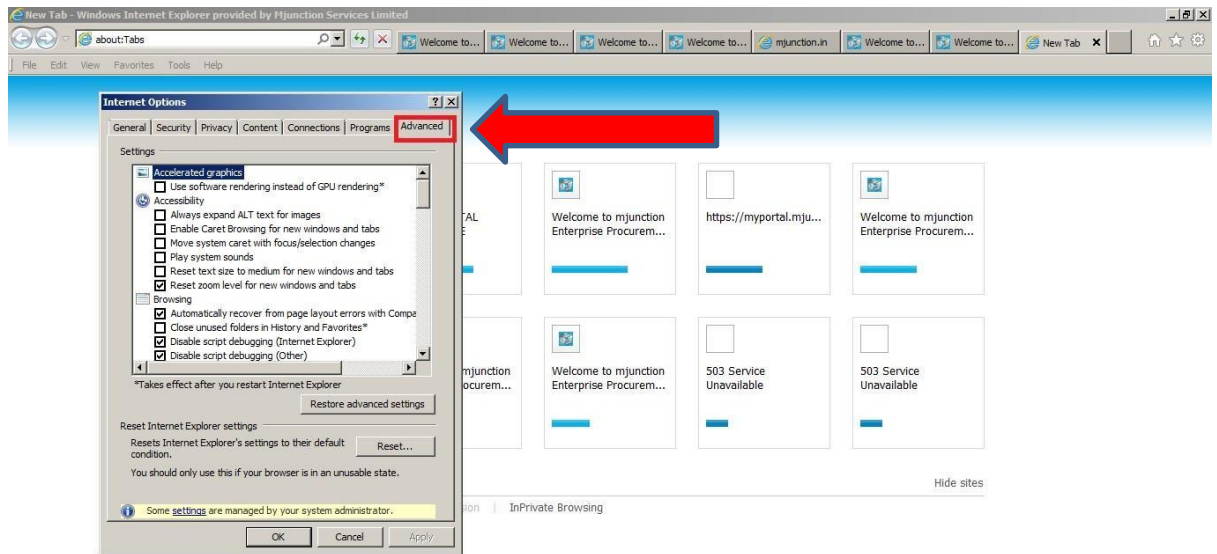
Follow (i) – (iv) as described below with screen shots

(i) Internet Explorer → Tools → Internet Options

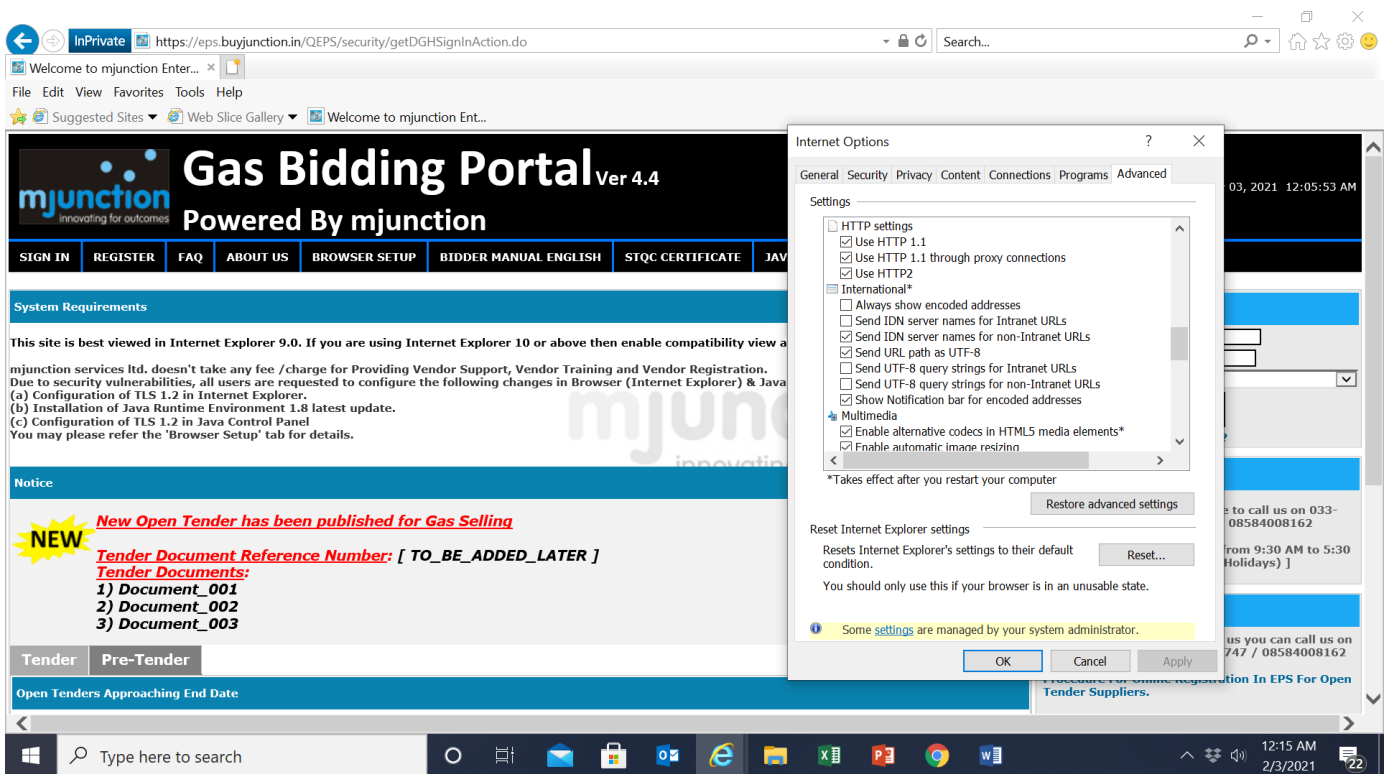


Browser-Java Compatibility Setting

(ii) Click on Advance

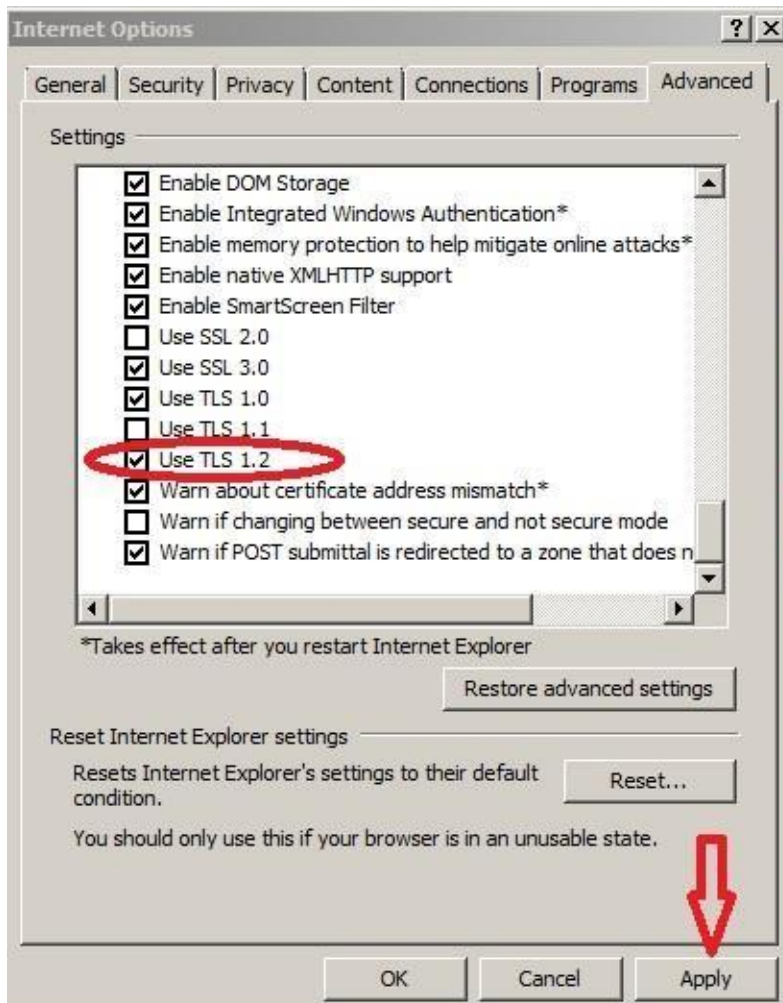


(iii) Pull down scroll bar to end



Browser-Java Compatibility Setting

(iv) Check the check box against Use TLS 1.2 as shown picture bellow & click Apply



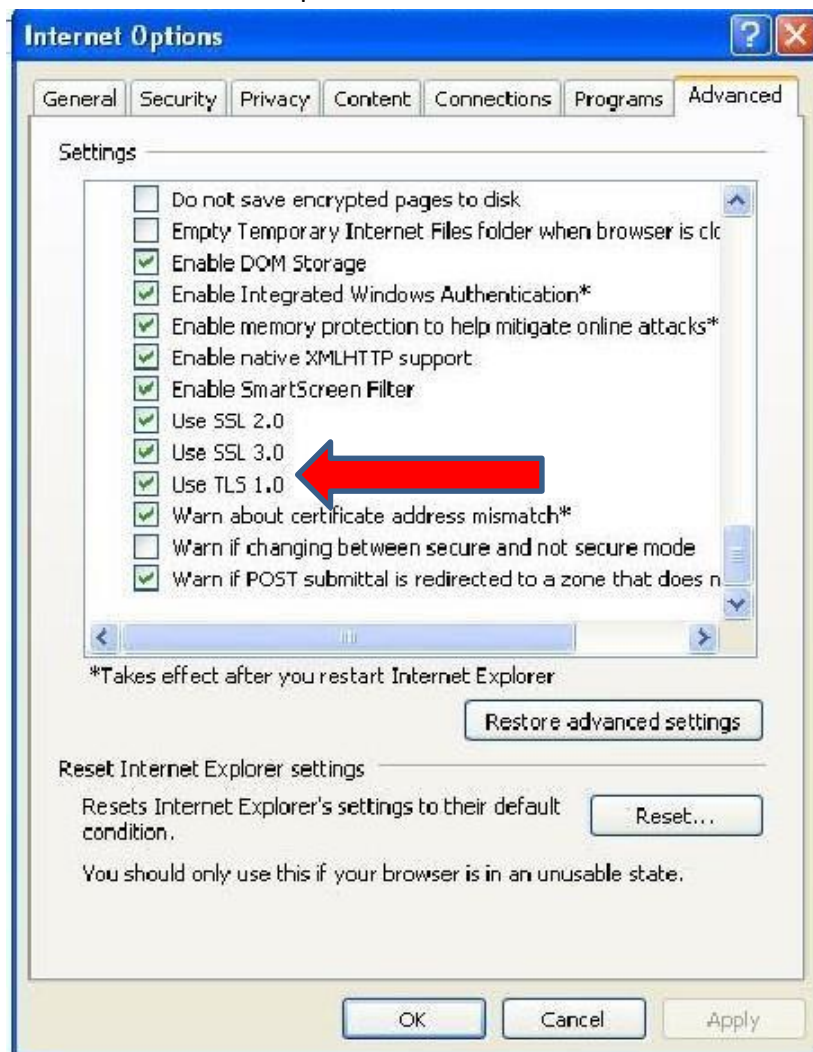
Browser-Java Compatibility Setting

d. TLS – Browser Compatibility Check

NOT all browser version (Internet Explorer) will support TLSv1.2 protocol. You may check TLSv1.2 enable browser by visiting the below url.

https://en.wikipedia.org/wiki/Template:TLS/SSL_support_history_of_web_browsers

Please note that in older browsers, you may not find **Use TLS 1.2** option as per below dialogue box and hence this browser is NOT compatible. You need to upgrade your browser to Internet Explorer 9 or above



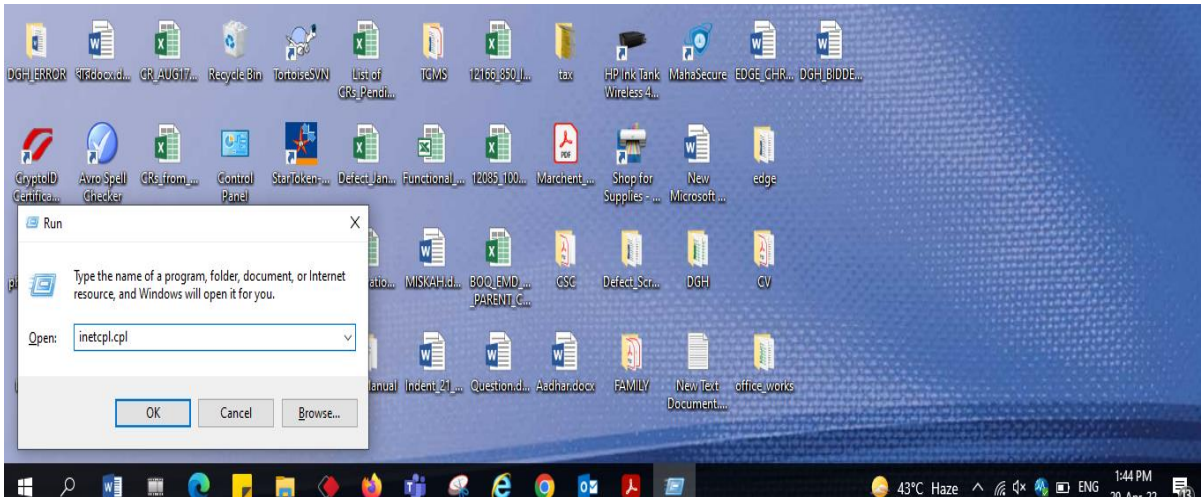
Browser-Java Compatibility Setting

E. EDGE browser setting

Step:1

Open Internet Property by following :

Go to start menu>click Windows+Run>enter the command **inetcpl.cpl** and click Ok

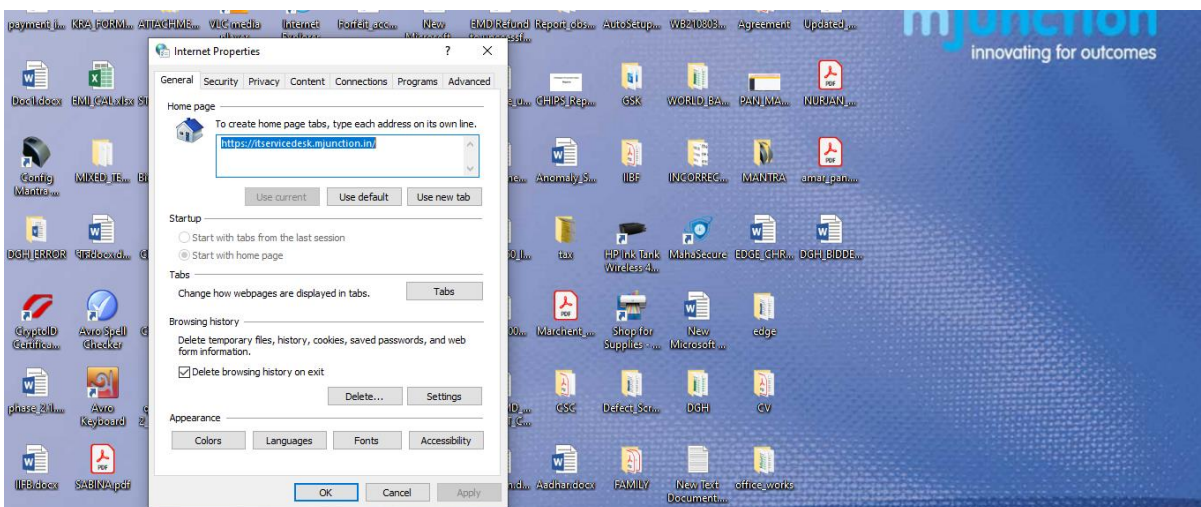


Step 2:

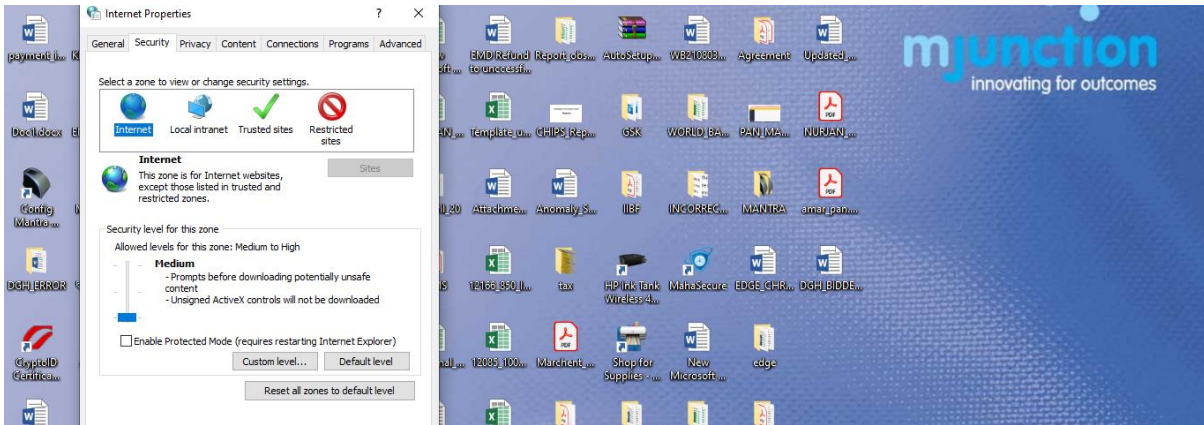
Add the application URL to the Trusted Site List (Security> Trusted Sites)

Set the IE security levels as below (Security >Internet>Custom level):

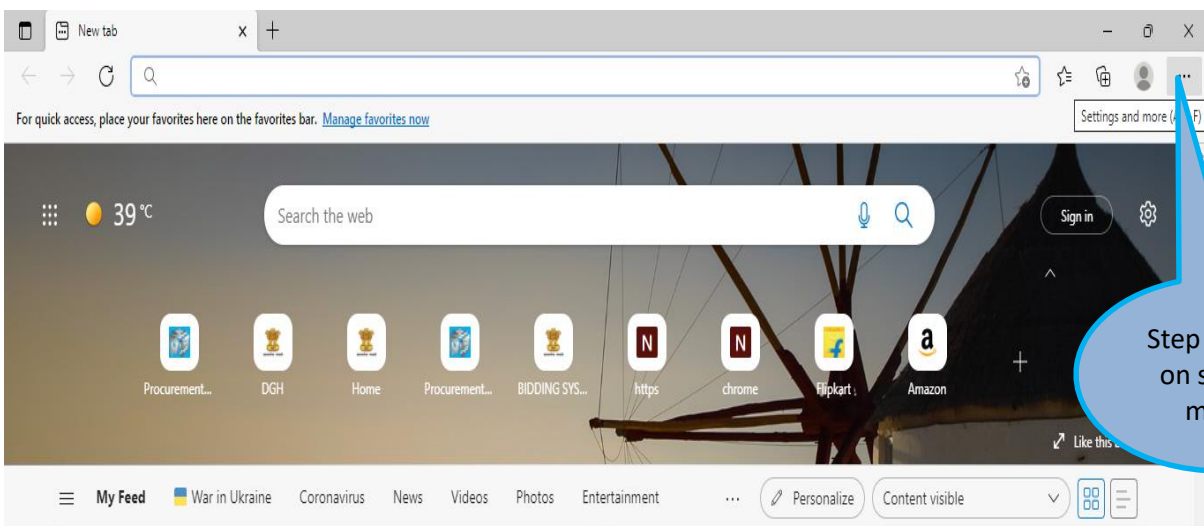
- ✓Internet: Medium-high (default)
- ✓Trusted sites: Medium (default)
- ✓Select Enable or Prompt for the required ActiveX related options under 'Internet' and 'Trusted sites'



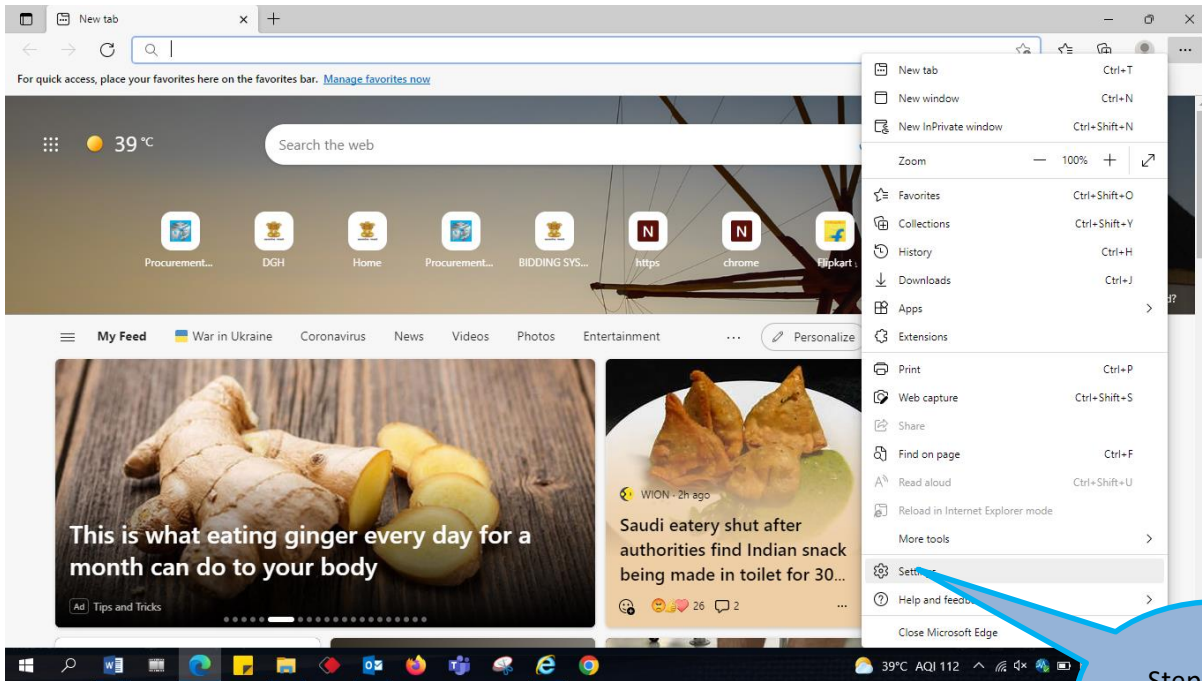
Browser-Java Compatibility Setting



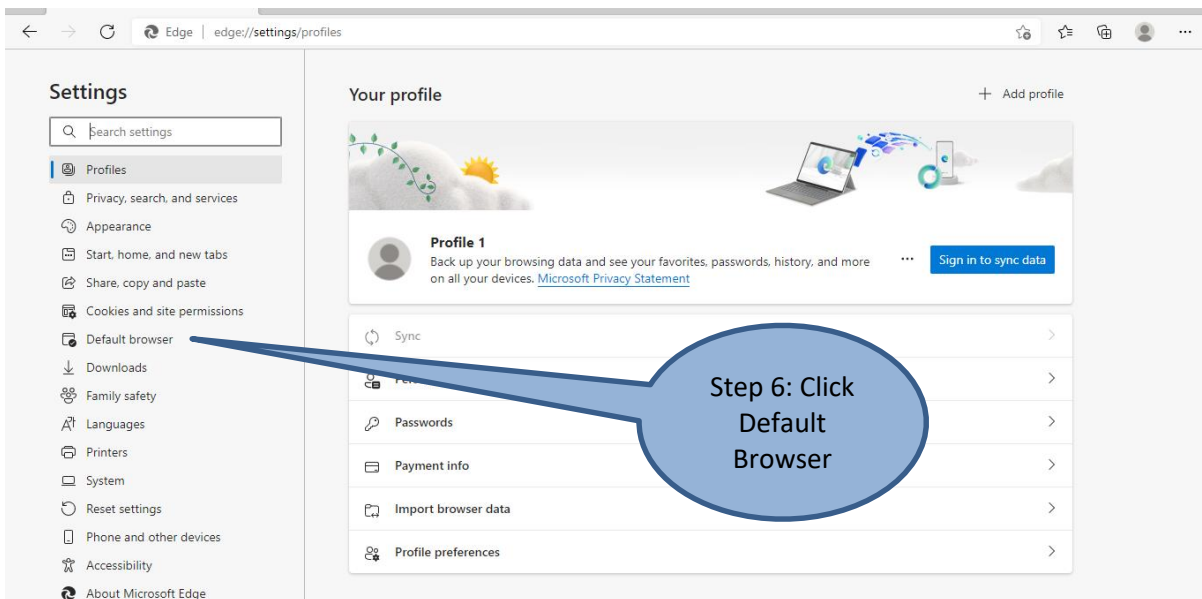
Step 3: Open the Edge Browser



Browser-Java Compatibility Setting

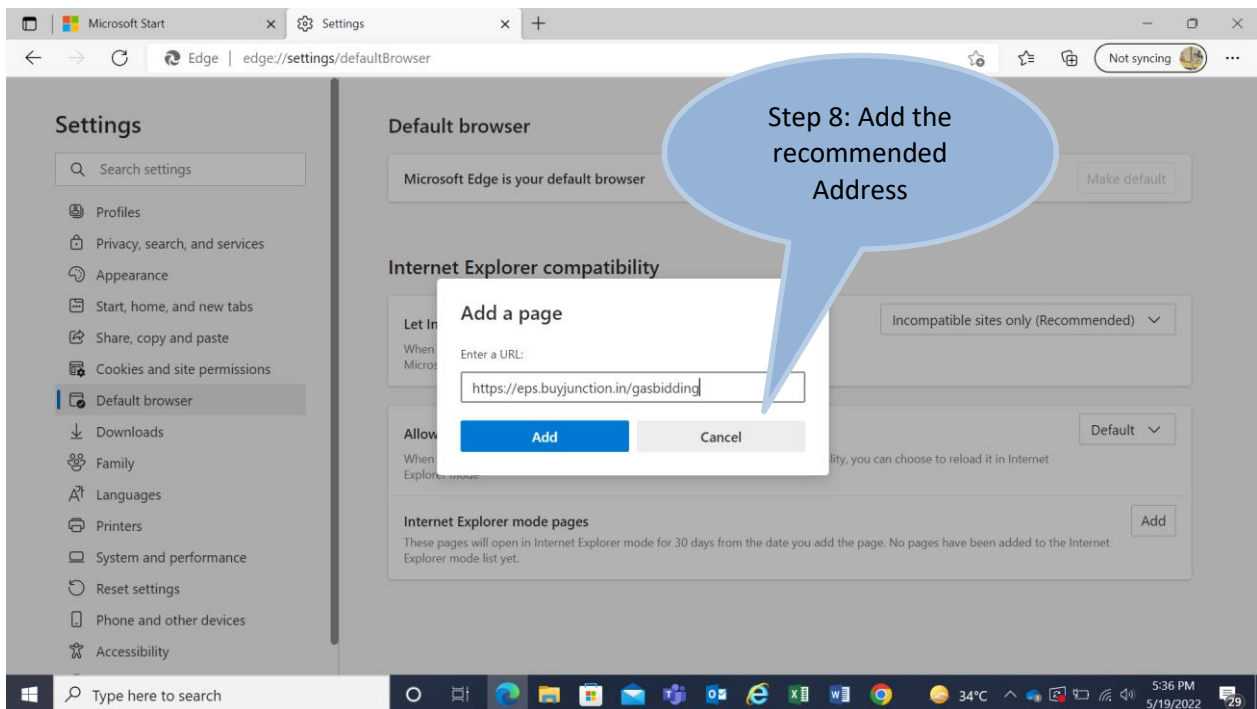
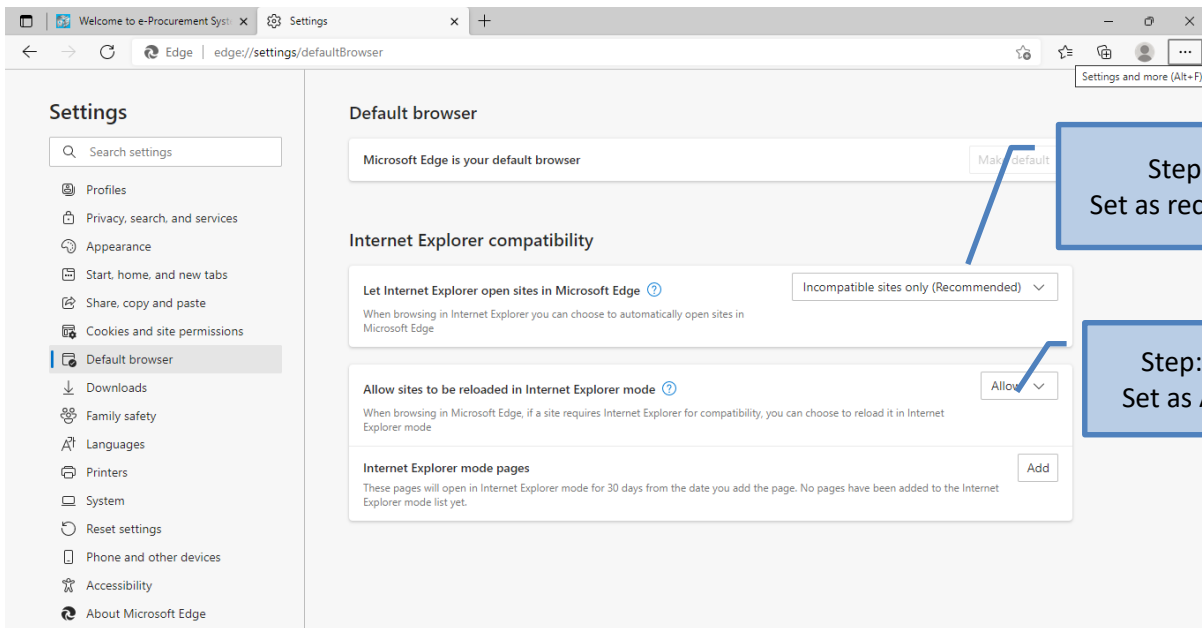


Step 5: Click on setting



Step 6: Click Default Browser

Browser-Java Compatibility Setting



Browser-Java Compatibility Setting

The screenshot shows the Microsoft Edge settings page for 'Default browser' and 'Internet Explorer compatibility'. A blue callout bubble with the text "Step 10: Reopen the browser after successful address addition" points to the 'Internet Explorer mode pages' table.

Default browser

Microsoft Edge is your default browser

Internet Explorer compatibility

Let Internet Explorer open sites in Microsoft Edge

When browsing in Internet Explorer you can choose to automatically open sites in Microsoft Edge

Allow sites to be reloaded in Internet Explorer

When browsing in Microsoft Edge, if a site requires Internet Explorer for compatibility, you can choose to reload it in Internet Explorer mode

Internet Explorer mode pages

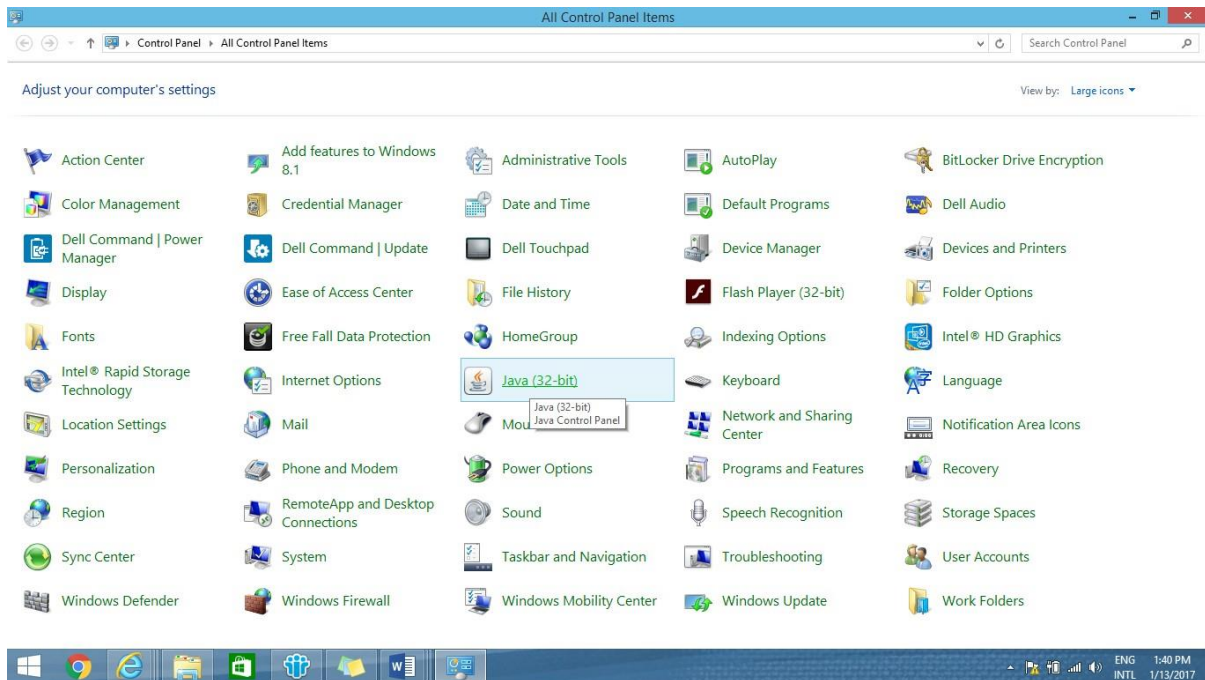
These pages will open in Internet Explorer mode for 30 days from the date you add the page. You have 1 page that'll automatically open in Internet Explorer mode.

Page	Date added	Expires	
https://eps.buyjunction.in/gasbidding	5/19/2022	6/18/2022	

Browser-Java Compatibility Setting

B. JAVA Set up and compatible JAVA Versions

Open Control Panel – Double Click the Java Icon to open the Java control panel



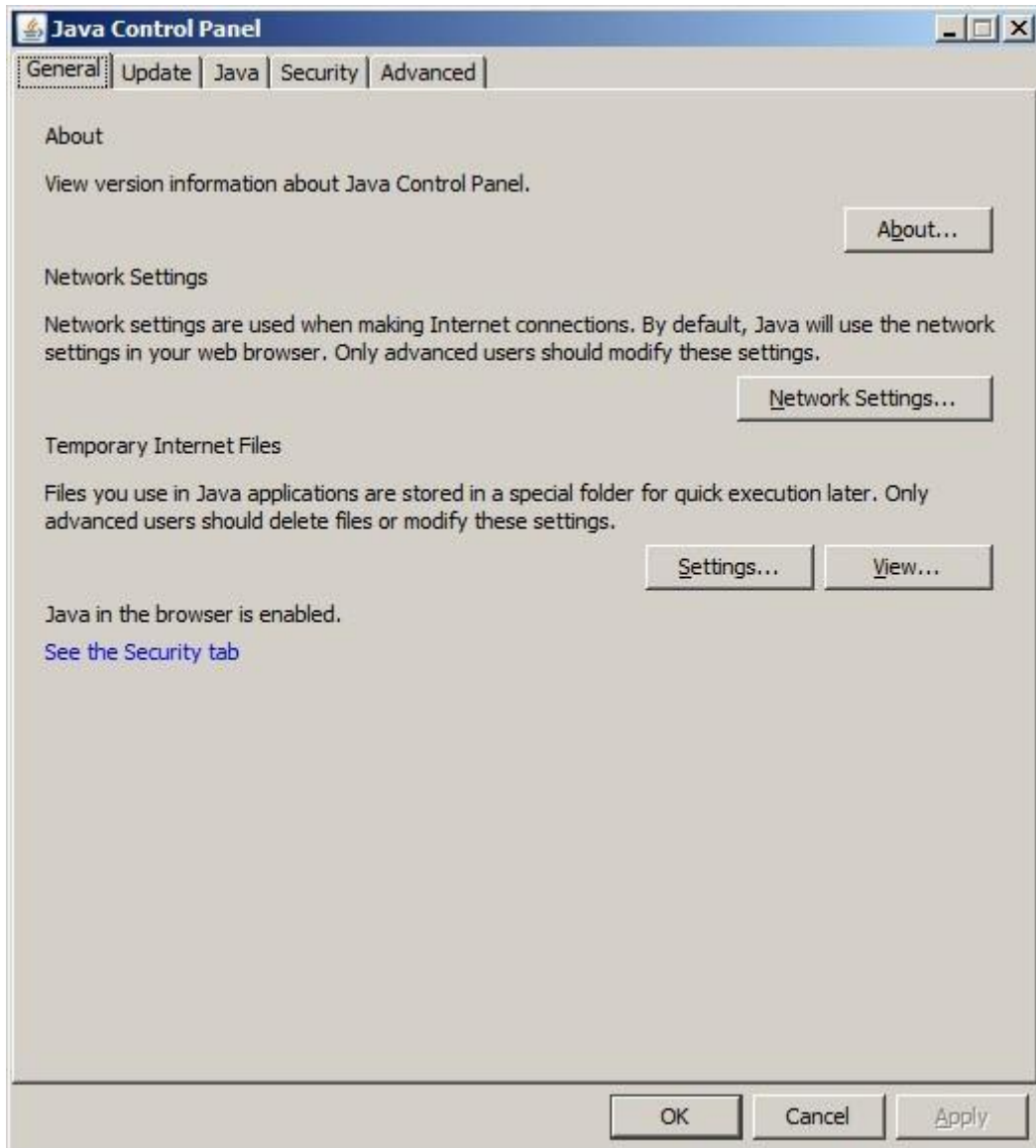
a. Install Java Runtime Environment (JRE) 1.8

1. Please install [Java Runtime Environment \(JRE\) 1.8](http://www.oracle.com/technetwork/java/javase/downloads/java-archive-javase8-2177648.html#jre-8u101-oth-JPR) from the link provided below

<http://www.oracle.com/technetwork/java/javase/downloads/java-archive-javase8-2177648.html#jre-8u101-oth-JPR>

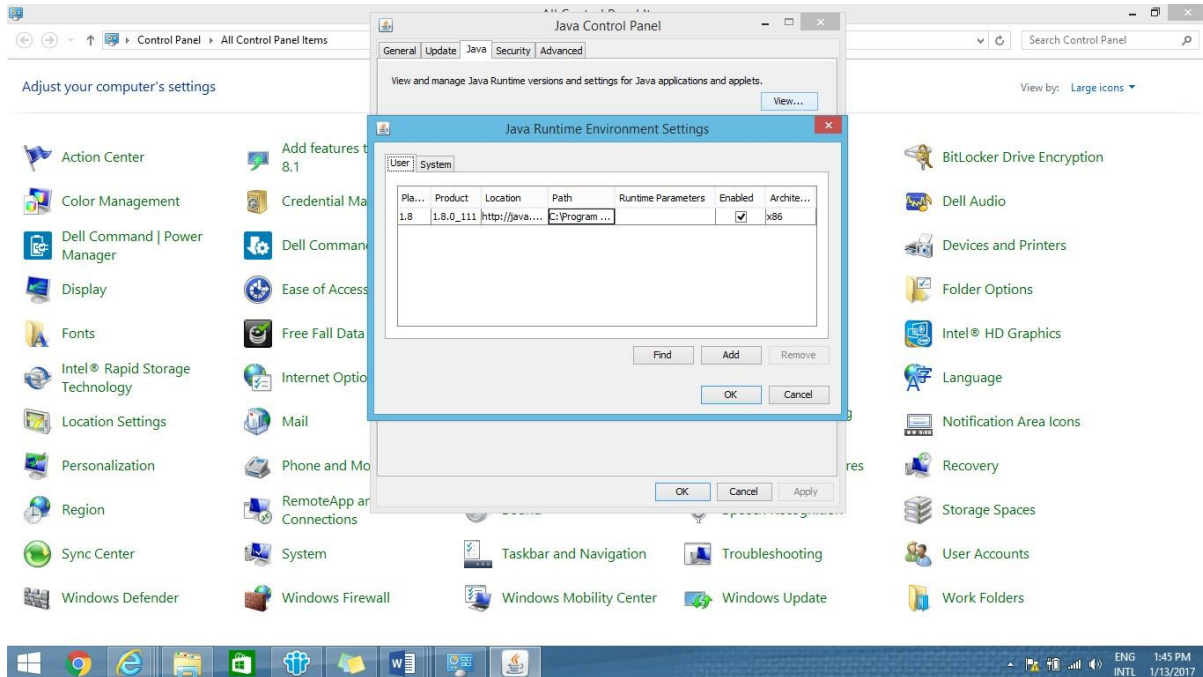
2. Click Control panel 3. Click on Java icon in Control panel, following dialogue box will come

Browser-Java Compatibility Setting



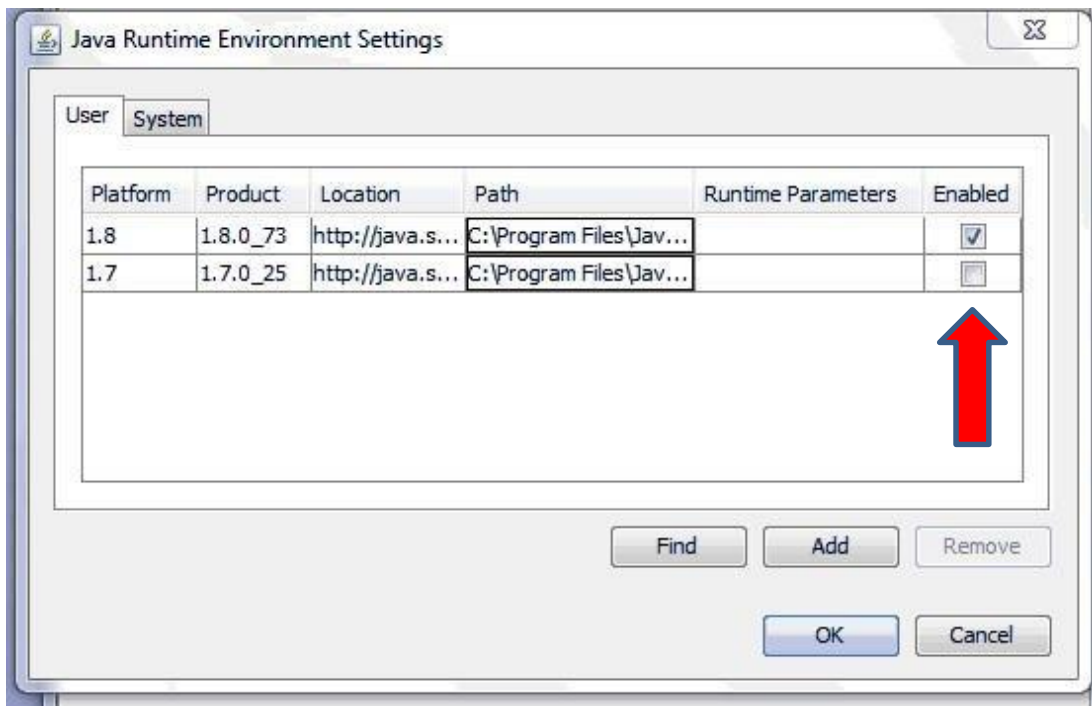
Browser-Java Compatibility Setting

4. Click on Java ->View, following dialogue box will come



5. Enable JRE 1.8 (if not enabled already) and Disable all other JRE's (if not disabled already)

Browser-Java Compatibility Setting



6. Click OK

b. Compatible JAVA Versions

a) Platform – Windows 7/8/ IE 9/10/11/64 Bit

1. Please Install Java 1.8 Update 91/101 (Both 32 & 64 Bit).
2. Also Please Un-install all other versions of Java present in the system.
3. Open your Internet Explorer (9/10) - Go to tools - Internet Options - Security - Trusted Sites- Add the "<https://eps.buyjunction.in/gasbidding>" URL.
4. Tools - Internet Options -Manage Add On's - Enable all Java Plug INS.
5. Tools - Internet Options - Security - Custom Level - Reset to medium Low.
6. Control Panel - Java - Security - Lower the status Bar to medium.
7. Control Panel - Java - Advanced - Enable Logging in.

b) Platform-Windows 10/IE11/Edge/64 Bit:

1. Type the website address on Microsoft Edge
2. On the extreme Right Hand side, you will find 3 dots, please click on the same & choose 'Open with Internet Explorer'

Browser-Java Compatibility Setting

3. Please Install Java 1.8 Update 91/101 (Both 32 & 64 Bit)
 4. Then Follow the same settings as mentioned above.
- c) **For Windows 7, 8, 10 with 32 Bit Systems Only Install the 32 Bit Java.**
- d) **All required Java downloads can be obtained from – java.com / www.filehorse.com**

Browser-Java Compatibility Setting

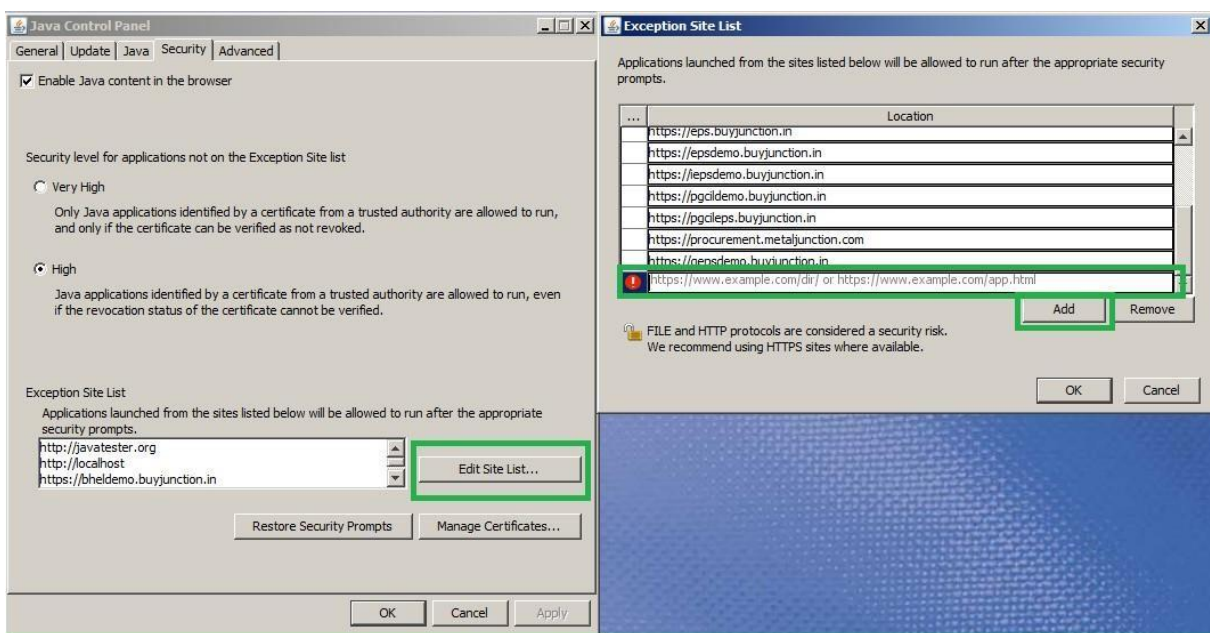
C. JAVA Console and URL Compatibility

To allow the browser to launch the JAVA application, the designated/required sites need to be added to the JAVA site list. The steps are provided below:-

a. Add to Java Site List

Start - Control Panel - Java - Security tab - Click "EDIT SITE LIST" button - ADD – type url (as mention below) to use, -Click ADD button to save - OK.

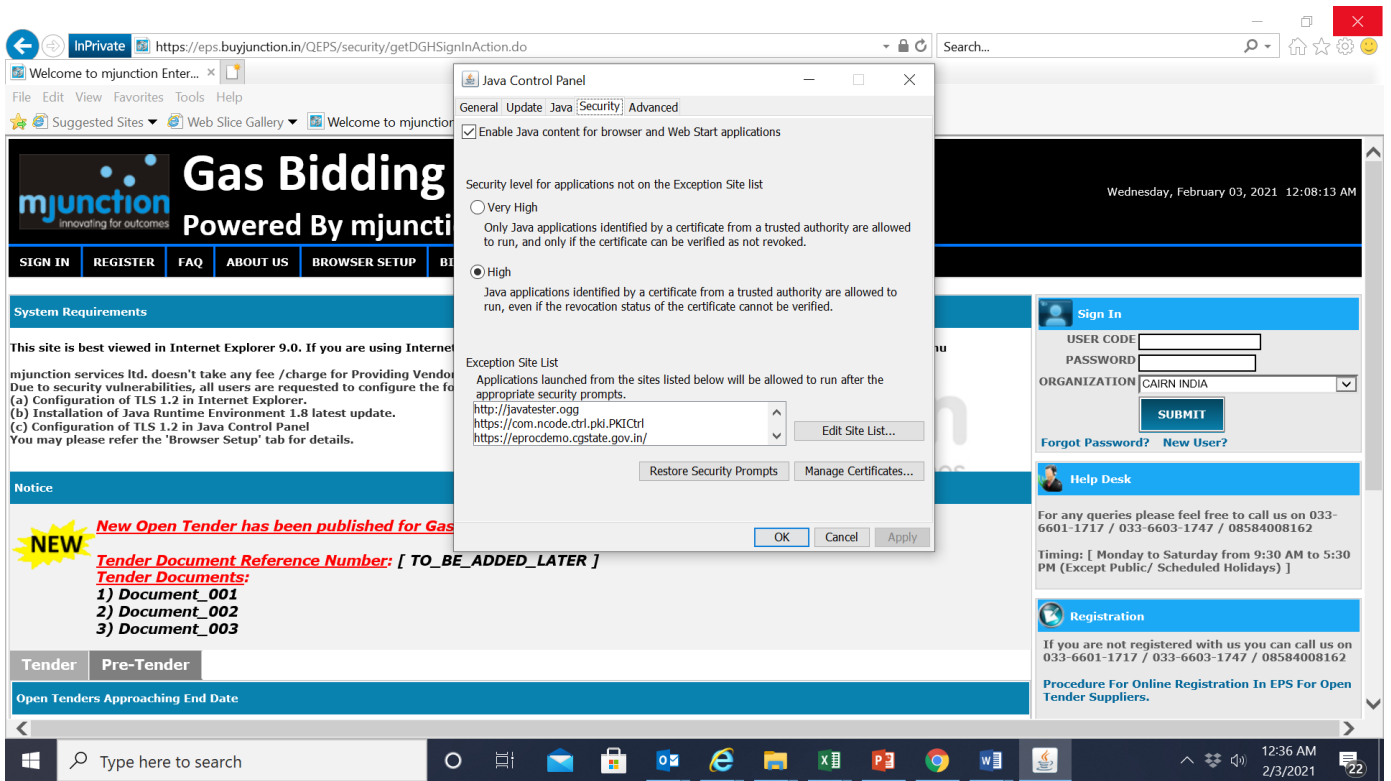
For Gas Bidding : <https://eps.buyjunction.in/gasbidding>



b. Security Medium

Start - Control Panel - Java - Security tab - Select the security level scroll bar - Pull down [or select radio button] it to MEDIUM and click Apply

Browser-Java Compatibility Setting

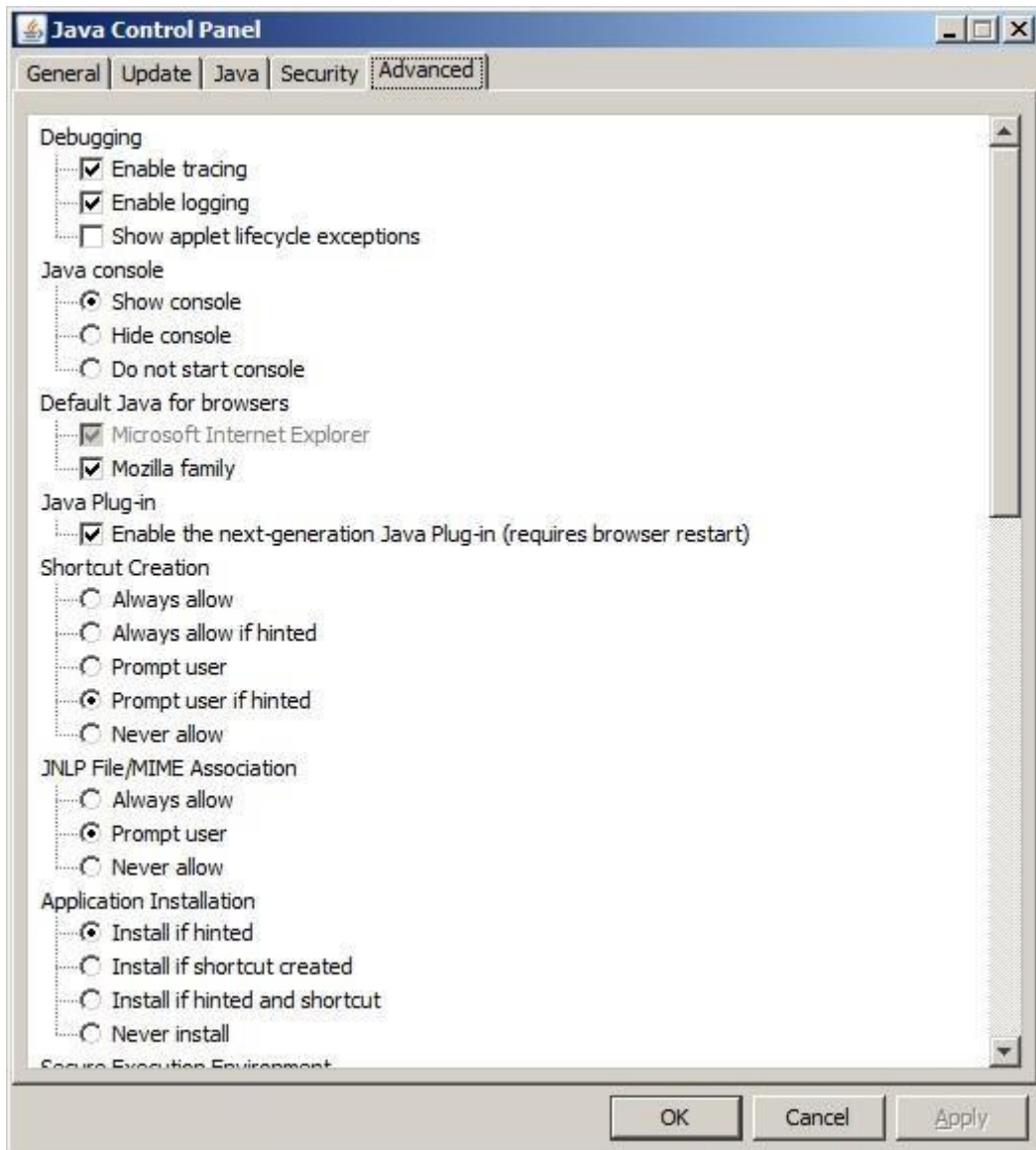


c. TLS – Set up:

Follow (i) – (iii) as describe below with screen shots

(i) Click on **Advance** tab, following dialogue box will come

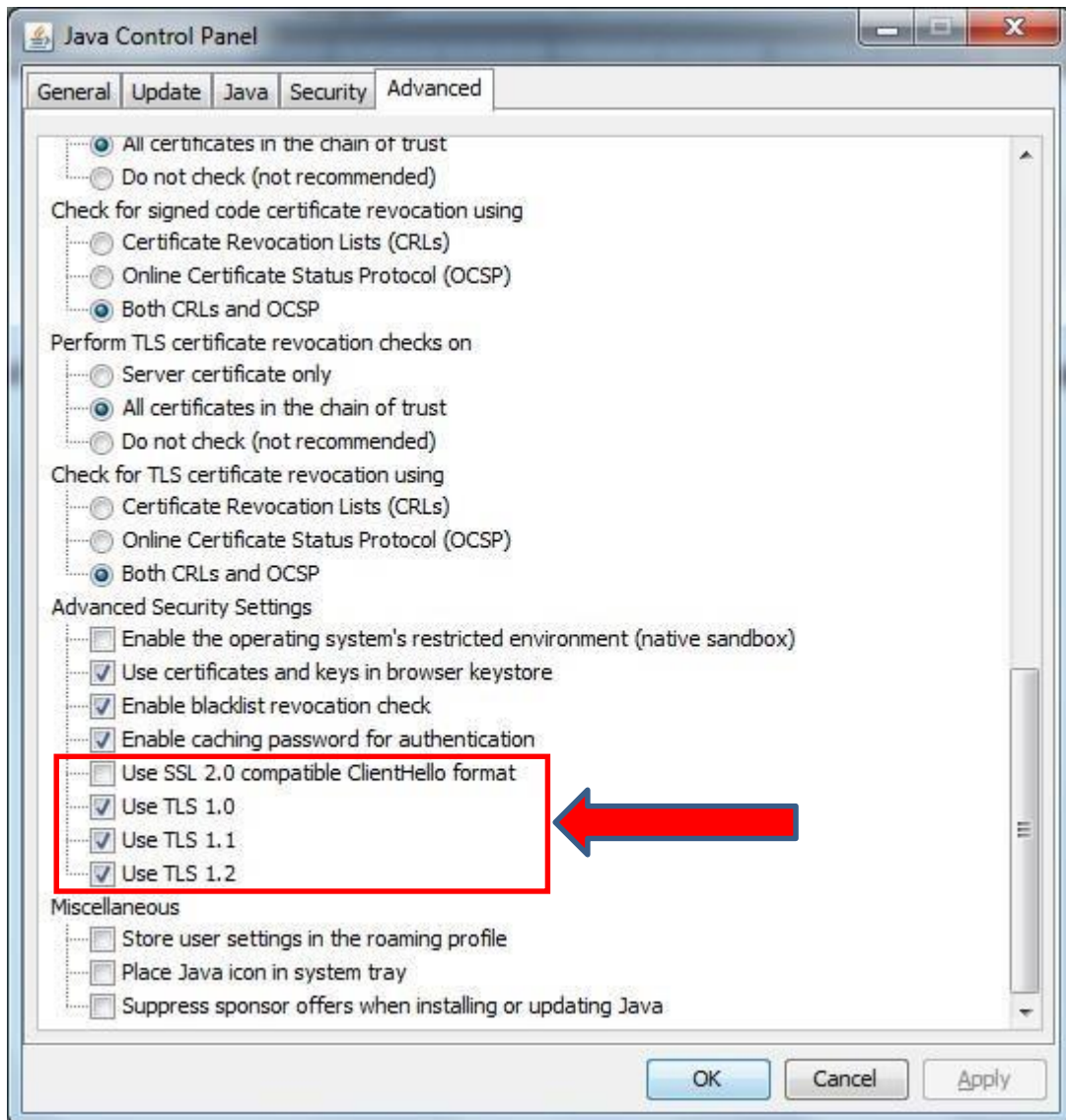
Browser-Java Compatibility Setting



- (ii) Pull down scroll bar, Ensure the following settings are done as shown in below dialogue box:
- Use SSL 2.0 is unchecked
 - Use TLS 1.0 is checked
 - Use TLS 1.1 is checked

Browser-Java Compatibility Setting

d. Use TLS 1.2 is checked



(iii) Click Apply and then OK

D. Checking JAVA Installation

To access Digital certificate for Signing & Encryption/Decryption based solution, an appropriate java version must be installed into the system and also plugged-in with the browser. To ensure such installation along with plugged-in with browser, perform any one of the following options. On completion of any one of the option, it will display java version installed in your system ensuring that this version is plugged-in with the browser.

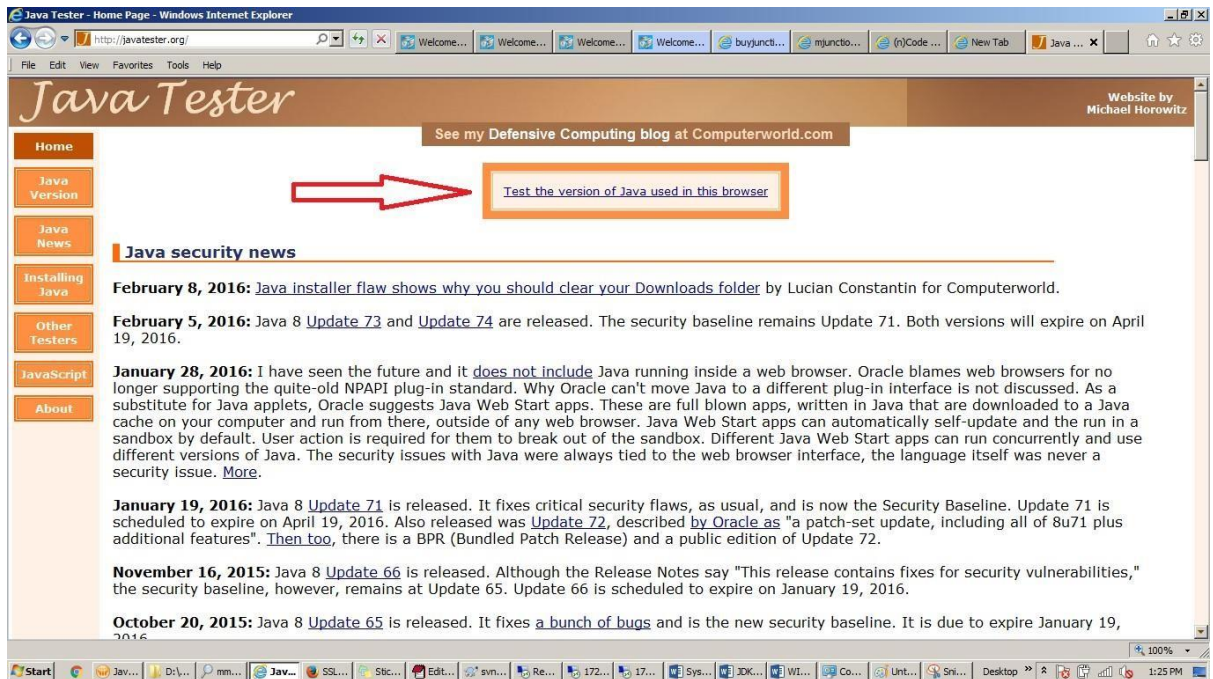
Browser-Java Compatibility Setting

(a) **Option-1:** Conduct testing by using <http://javatester.org/>

STEP 1: Open IE

STEP 2: type **javatester.org** in address bar

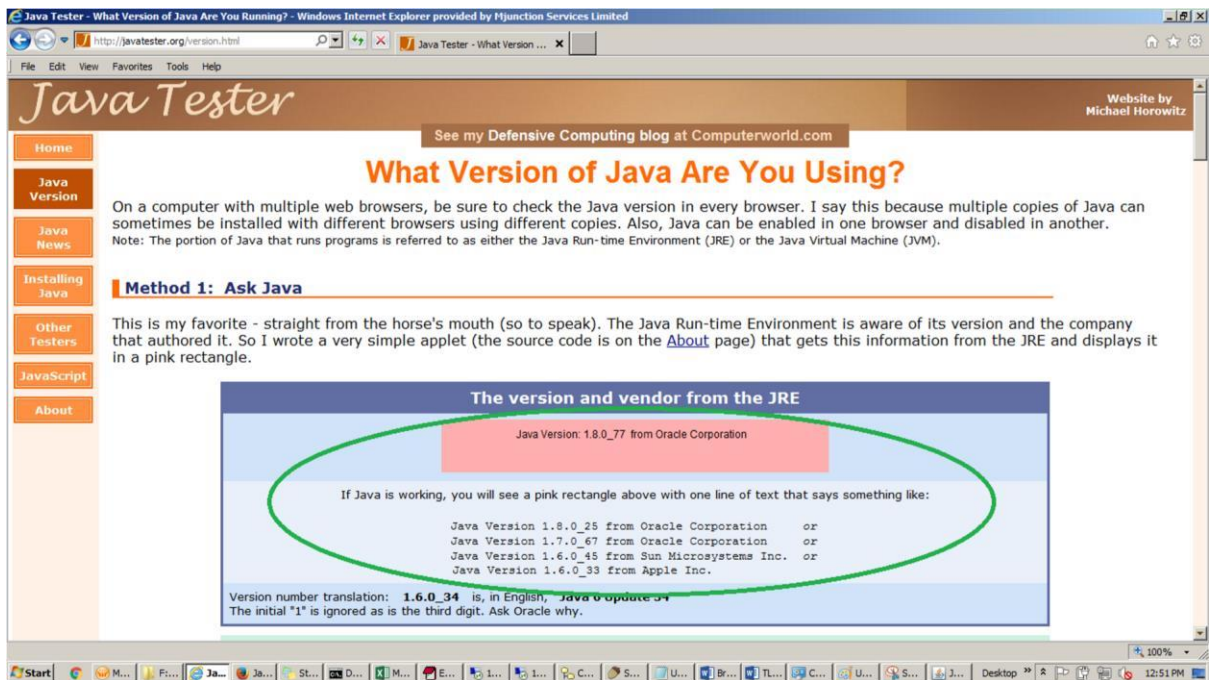
Observation: Below page will display (look at the arrow)



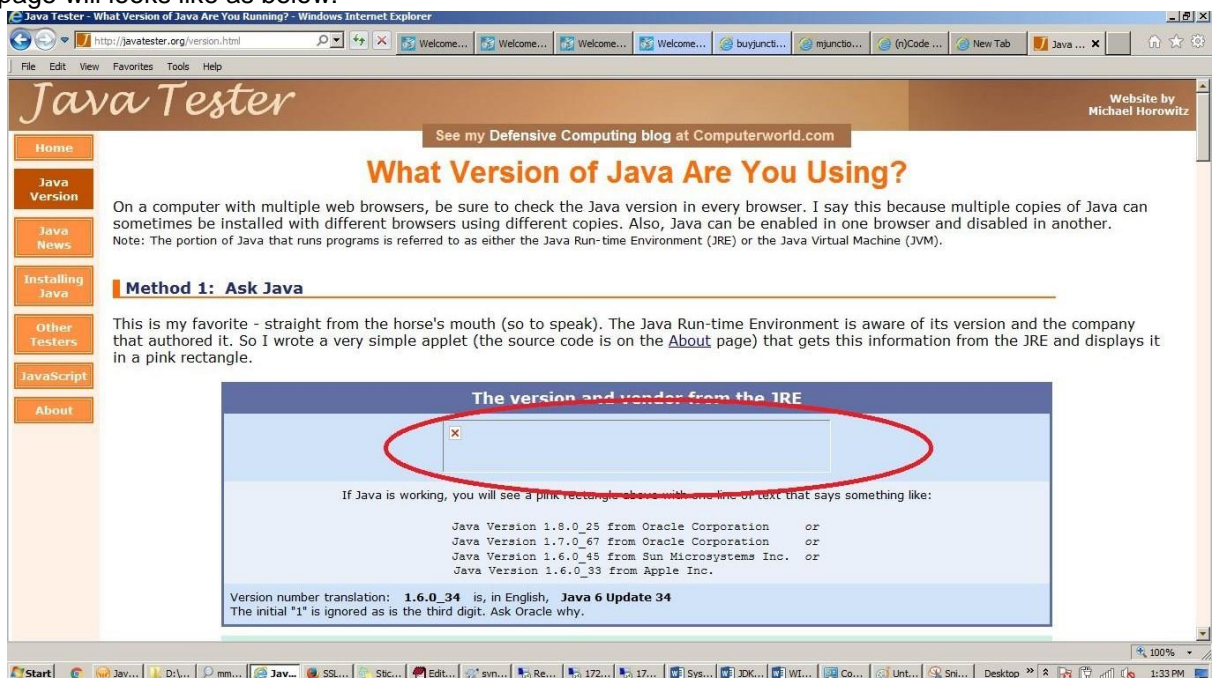
STEP 3(a): Click **test the java version used in this browser** (above screen shot).

Observation: Message in red-circle, which display java version, this ensures the presence of java along with version information. If the version is displayed correctly then it means that the Browser is recognising the java installed in your system. This also means that the Installed java is working properly

Browser-Java Compatibility Setting



STEP 3(b): If java is either **NOT** working properly or **NOT** installed in your machine, display page will look like as below:



In this case download latest version of java from <http://www.oracle.com/technetwork/java/javase/downloads/index.html> and install in your machine.

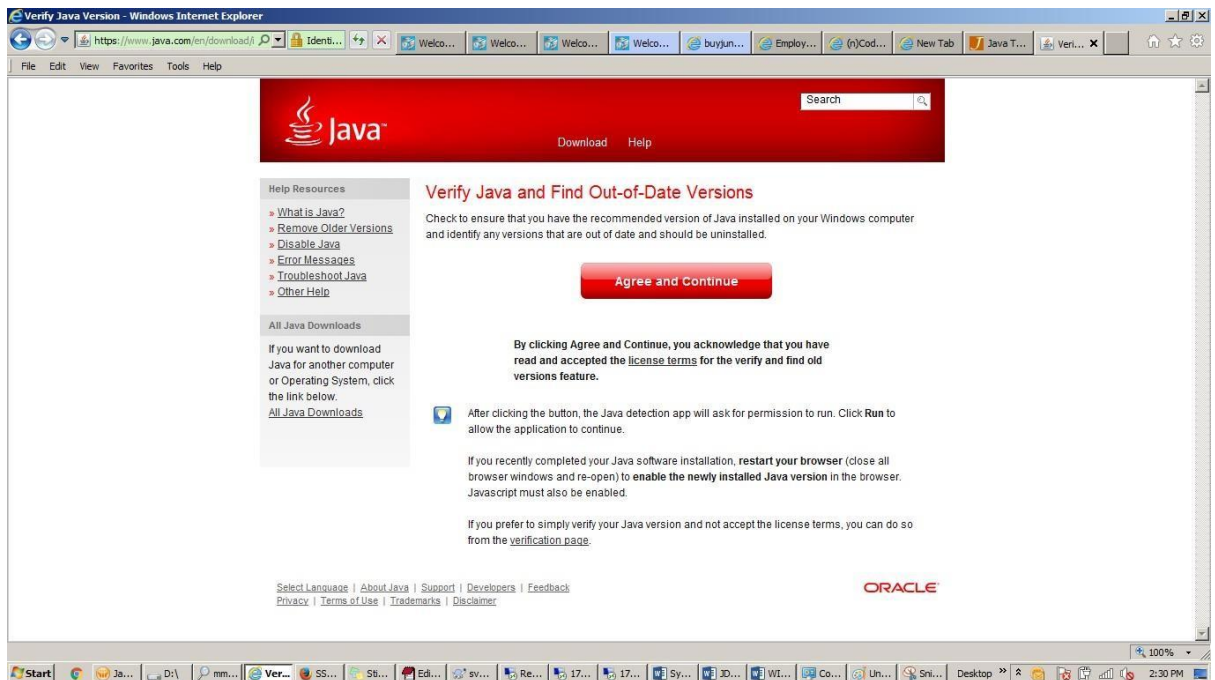
Browser-Java Compatibility Setting

(b) **Option-2:** Conduct testing by using Verify java link in java.com
<https://www.java.com/en/download/installed.jsp>

STEP 1: Open IE

STEP 2: type <https://www.java.com/en/download/installed.jsp> address bar

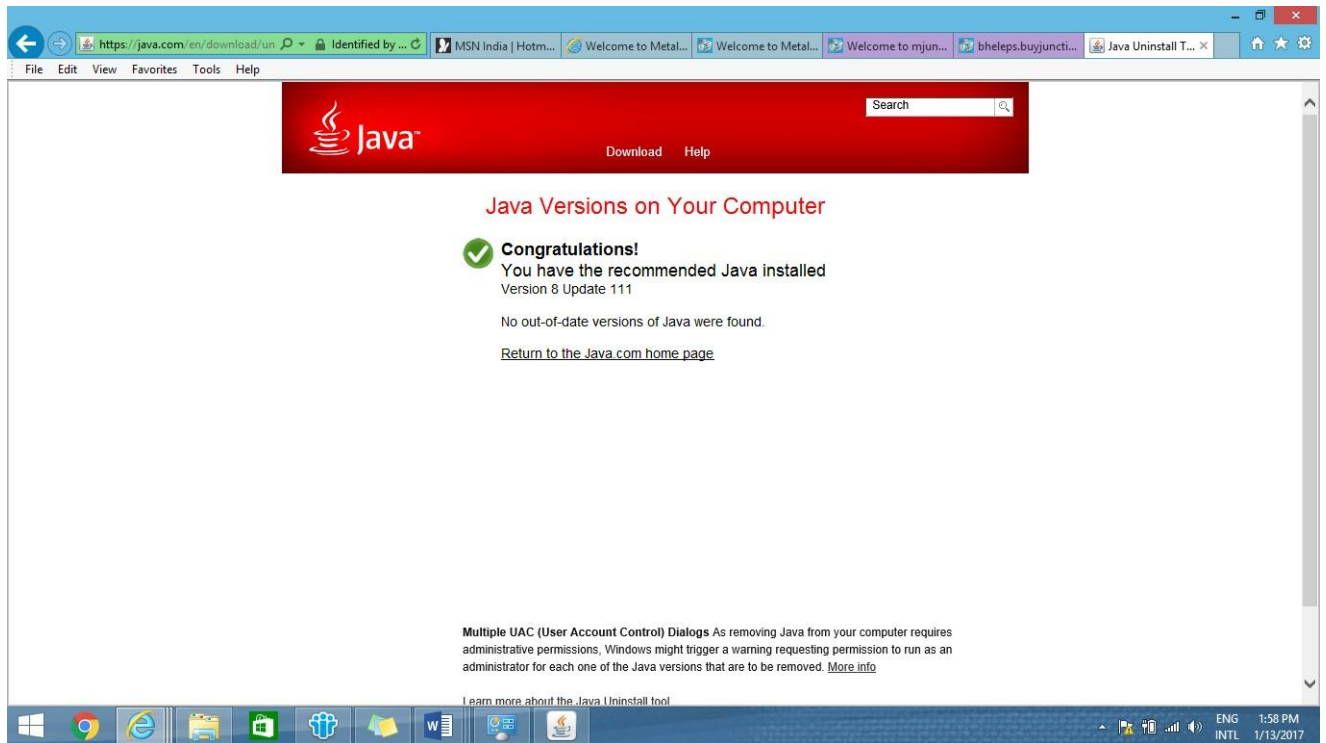
Observation: Following page will display with 'Agree and Continue' button



STEP 3: Click **Agree and Continue**

Observation: Below screen will appear which displaying message about the existing java version in your system along with latest available version.

Browser-Java Compatibility Setting



STEP 4: If java version displayed in above screen is version 8 with update 91 or more, it will work.

Browser-Java Compatibility Setting

E. Dos AND Don'ts

	Do's	Don'ts
JAVA	<ul style="list-style-type: none"> • Install JAVA 1.8 with latest updated o • Keep only one JAVA 1.8 installed in system. 	<ul style="list-style-type: none"> • Installing incorrect versions of JAVA • Keeping all of them installed in user system
	<ul style="list-style-type: none"> • Set JAVA Security to High 	<ul style="list-style-type: none"> • Setting JAVA Security to Very High
Browser	<ul style="list-style-type: none"> • Use Internet Explorer only • Use I.E 9 or above. • Set Compatibility mode properly for I.E 10 and I.E 11. 	<ul style="list-style-type: none"> • Using Mozilla Firefox, Chrome, Opera etc as browser • Using I.E 8 and below. • Setting Compatibility mode improperly for I.E 10 and I.E 11.
	<ul style="list-style-type: none"> • Enable Include Local Directory Path when uploading files to a server..... option in I.E->Tools->Internet Options->Security->Custom Level->Miscellaneous->.... Before attaching any document during bid submission 	<ul style="list-style-type: none"> • NOT Enabling Include Local Directory Path when uploading files to a server..... option beforehand and started attaching documents
Regional & Language Settings	<ul style="list-style-type: none"> • Set the Regional & Language Format in Control Panel to ENGLISH (UNITED STATES) 	<ul style="list-style-type: none"> • Setting the Regional & Language Format in Control Panel to some options such as ENGLISH(INDIA) or ENGLISH(UNITED KINGDOM) etc
DSC	<ul style="list-style-type: none"> • The DSC requirement is CLASS 3- SHA 2- 2048 BIT SIGNING AND ENCRYPTION COMPONENT SEPARATELY. • The DSC should not be expired The EToken Drivers must be installed properly • Root Certificates must be installed 	<ul style="list-style-type: none"> • Using CLASS 1 or 2 DSC. • Using only SIGNING certificate Or ENCRYPTION certificate • Using Expired Certificate EToken • Drivers Not installed or installed improperly • Root Certificates Not installed
Registration in EPS / ID & Password / DSC Activation	<ul style="list-style-type: none"> • Register properly in EPS. The Bidder Name during registration in EPS must be same as the Bidder Name in DSC. • Contact Helpdesk for DSC Activation 	<ul style="list-style-type: none"> • Incorrect / Incomplete Registration in EPS with Invalid PAN No. • The Bidder Name during registration in EPS is different from Bidder Name in DSC.
Bid Submission	<ul style="list-style-type: none"> • Encrypt the attachments properly to generate files with .enc extension Check the size of the .enc files which must NOT be 0 KB. • Upload the .enc files properly at proper place. • Post submission of bid, download the attachments and decrypt to ensure that attachments has been uploaded properly and corrupted files were NOT attached • Submit bid well before tender due date to avoid last minute issues and for peace of mind 	<ul style="list-style-type: none"> • Improperly encrypting documents generating corrupted files of 0 KB • NOT Checking the size of the .enc files • NOT Uploading the .enc files. Rather trying to upload .pdf, .xlsx etc. (unencrypted) files • Post submission of bid, NOT checking the uploaded files by decrypting • Submitting bid at last minute which is prone to errors and corrupted bid submission

Browser-Java Compatibility Setting